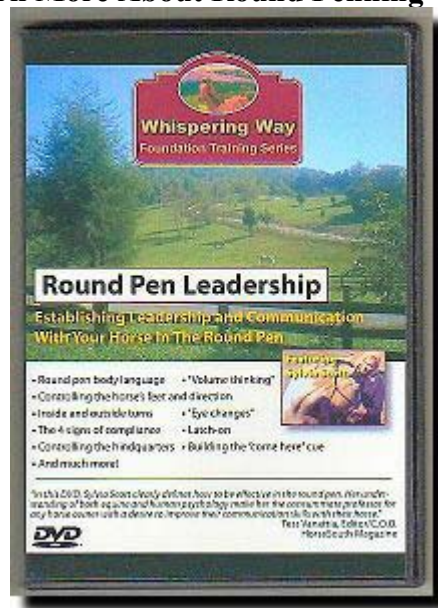


Step-by-Step
How to Use the Round Pen to Help a Horse
To Latch On *At Liberty*

And How to Then Desensitize
A Horse to Human Touch if Necessary

By Sylvia Scott
Natural Horsemanship Trainer & Clinician
Founder, *Virginia Natural Horsemanship Training Center*, Blacksburg, Virginia
Email: Sylvia@naturalhorsetraining.com
Web site: www.naturalhorsetraining.com
Copyright © 2002-2006 by Sylvia Scott – All rights reserved

To Learn More About Round Penning Via **Video**



Round Pen Leadership -
Establishing Leadership and Communication With Your Horse In The Round Pen
Featuring Sylvia Scott

Proper round penning is not about mindlessly longeing a horse around and around a round pen, but is about the opposite: it is direct one-to-one very precise communication with very specific cues and instructions. When round penning is done correctly, the horse will be quieter, more compliant, and a much more willing partner in all of your other training activities. Round penning can be an invaluable tool in developing a happier horse -- and a happier rider!

What You Will Learn

In this video, you will learn how to effectively communicate with your horse in the round pen to establish respect for your leadership position. The video begins with a discussion of some of the

fundamental techniques for effective round penning using Natural Horsemanship principles. Then, these round pen techniques are demonstrated in actual round pen sessions with four different horses of varying temperaments:



Generally
Compliant



Somewhat
Rebellious



Nervous &
High-Spirited



Aggressive &
Attacking

You will also learn about round pen body language, “volume thinking,” controlling the horse’s feet, direction, inside & outside turns, “eye changes,” the 4 signs of compliance, latch-on, controlling the hindquarters, building the “come here” cue, and much more!

Running Time: 71 Minutes

To Order the Sylvia Scott Round Pen Leadership Video Now Click Here:
https://scotttechgroup.securelook.com/SylviaScott/VNHTCProducts.htm#DVD_Round_Pen_Leadership

In this DVD, Sylvia Scott clearly defines how to be effective in the round pen. Her understanding of both equine and human psychology makes her the consummate professor for any horse owner with a desire to improve their communication skills with their horse.” Tess Vanattia, Editor/C.O.O. , HorseSouth Magazine

Round penning work designed to teach a horse at liberty to latch onto the human voluntarily, taught properly, does some remarkable things to help a horse to get past a variety of issues – often fast, too, if done correctly! In natural horsemanship we follow the tenet that ***if you fix the inside of the horse, the outside will follow***. This round pen exercise serves exactly that purpose. In proper round penning, we are working on the inside emotional side of the horse to help the horse to learn new behaviors, new expectations and also to help the horse to trust us as competent, fair leaders.

I use this form of "training tool" in a variety of horse cases, such as, but not necessarily limited to: very serious trust issue horses, extremely fearful horses, horses no one can get a hand on, a formerly abused horse, some wild horses, a horse with very big, over-the-top take-over issues, overly aggressive horses, hard-to-catch issue horses and sometimes simply just-starting-out green horses. Not all horses necessarily need or have to be round penned, but it is indeed a handy "tool" to have in your "tool belt" for when needed. **The more tools, or techniques, you have in your training "tool bag," the more you have to draw upon to strengthen the effectiveness of your natural horsemanship training program.**

I have studied round penning methods in great depth from all the natural horsemanship masters out there for many years. And what I discovered early on was: via taking *only* the *best* aspects from all the best round penning methods and philosophies "out there," and merging them, but keeping only the most important and effective features, discarding any least effective or unnecessary downsides, a highly effective round penning method emerged! Here I will teach step-by-step that method: how to achieve the at-liberty latch-on from the horse, how it works in detail, why it works. And, beyond that, I will show how to then subsequently desensitize a horse to touch when necessary, if the horse cannot preliminarily be touched by humans (caused by fear, past trauma, abuse or simply a new-to-humans wilder horse) so that foundational training can truly begin! A great many clients I have taught this to, and even hundreds of emails begging me to explain better how to perform natural horsemanship round penning most effectively, had me realizing we truly need to take the mystery out of this form of "horse whispering" training!

Below, I will break down, step-by-step, how round penning the natural horsemanship way can be done, accomplishing quite great things – even begin permanent healing, and instilling greater trust, in so many horses who might need it. **We all can learn from each other**, so let's begin!

But First: The Round Pen Itself!



Why a *round* pen, you might ask? Simple: It has no corners, therefore, no beginning and no end. A horse cannot get stuck "ostrich-like," unproductively in a corner (i.e. the horse stuck in a squared area with head buried in a corner, hind end out, feet planted firmly in place), slowing down lesson progress – a circle has no corners! Therefore, in a round pen the horse can be moved around at liberty more easily. For much of horse training, especially to teach a horse to latch-on at liberty, ***we need horse movement***. In a round pen, the horse therefore stays more focused on you, the human director, in the middle, and can be progressed along the learning curve far more quickly and efficiently.

The ideal round pen size for our natural horsemanship training purposes here is: a 50-foot or 60-foot round pen. To remain safest throughout this exercise, you really shouldn't attempt this in anything smaller than a 50-foot round pen. And it is not as effective in anything larger than 100 feet. Height should be ideally six feet to discourage jumping, but you can get away with five-foot-plus heights with non-jumper-prone horses. It is best to have an easily opened gate as part of your round pen.

People often ask: Should you have a (see-through) pipe corral panel type round pen or a solid panel (completely closed-off) round pen? The argument that is often defended for solid panel round pens usually follows the line of thinking that: solid means the horse cannot see out, therefore, will make it easier for the horse to fully focus attention *only* on the trainer, with no outside distractions. I have used both and I have a definite opinion about that issue choice. I prefer the pipe corral panel round pen, where the horse *can* see out everywhere; I *want* the horse to get accustomed to distractions all around, even during lesson times, and that allows me the opportunity to help the horse to get past that and learn to remain focused no matter what is going on around the outside of the round pen.

The problem with training a horse in only the closed-off solid panel round pen is: the minute you take the horse out of that round pen, distractions the horse has not become accustomed to during lesson times hit, and you are back to base one with a sudden over-stimulated horse who forgets that what we learned inside the round pen also applies outside! Better to desensitize the horse to ongoing outside activity during lesson times in a visually stimulating pipe corral round pen, and work with the horse to learn how to *still* remain focused at all times, no matter what is going on outside. This more accurately simulates what we will be doing with that horse later, when riding/working together in the "outside world." The horse has to get used to distractions sometime! Best to go ahead and flush that issue out and fix it within the safe confines of a visually open round pen. This route nips potential future training setbacks in the bud when you do later have to take the horse outside the round pen to work.

Other perks of the visually open round pen:

- 1) The working area doesn't get as hot inside on higher-temperature days. The openness of the pipe round pen style allows for breezes to come through. This helps keep the horse – and us – remaining more comfortable during training sessions.
- 2) If we are going to use the round pen also for turnout, you can see inside more easily from the outside, to keep an eye on the horse – or horses, if more than one is in there during turnout. Also, if using it for turnout, horses get more bored and even anxious if left alone in a closed-up round pen than they do with the open style. And when bored or anxious, they then turn to other abhorrent behaviors, like biting or chewing on the walls or wood. Open pipe corral round pen allows them to see activity outside and not feel so alone or anxious.
- 3) It has been my experience that horses will try to "climb" when under pressure the sides of a solid pen more often than with a see-through pen, because they feel more trapped. And in natural horsemanship training we do not like a horse to feel trapped.

Those are just my own opinions as they apply to my own program, however. In the end, move in the direction that you feel works best for you, your horse(s) and your own situation. There really aren't any right or wrong answers there. Just: opinions and preferences.

Don't have a round pen? Round pens can be bought from a variety of places, or panels can be bought separately to easily assemble together to construct one yourself or you can build one yourself out of wood, etc. See below for more information:

Here's a link that gives good advice about what to look for in a round pen:

<http://www.c-siron.com/rpbuyersguide.htm>

To check out places you can buy round pens or panels to make a round pen, and TO GET THE ROUND PEN ENDORSED BY SYLVIA SCOTT click here: <http://www.naturalhorsetraining.com/RoundPens.html>

**Have you ever wondered how to
Build your own round pen?**

Building your own round pen yourself can be just as simple as buying metal round pen panels. Most of the time, it's a lot less expensive too.

"Building A Round Pen" shows you step-by-step how to build your own custom round pen. And you don't need a construction crew or a fully stocked workshop!

These sturdy and beautiful Round Pen plans are built with Wood fence or Wood and Vinyl fence - you pick. You'll end up with a gorgeous round pen in the color of your choice that actually matches your fencing and barn. This **Complete Guide to Building A Round Pen** has over 100 pages of step-by-step instructions, material lists, architectural plans, layouts, and tons of recommendations and helpful hints.

Costs to build your own round pen begin at around \$400. You get to choose what materials you use and you can even build it in stages if you are on a budget.

Round Pen Plans & Designs: Each of these plans comes with measurements, post placement, gate spacing and rail specifications. *Now don't worry, they're really easy to build - you don't need a degree in engineering to have your own custom round pen! You can even build your round pen by yourself or with help from friends. Each Round Pen Plan comes with a detailed material lists. That means you won't forget about screws or string at the last moment. Everything you can think of that you need to build your round pen is listed...down to the washers!*

To learn More About the "Building A Round Pen" Guidebook click here: <http://www.roundpen.info/>

For less-detailed instructions on how to build a wood round pen yourself, click here:
http://members.tripod.com/~White_Arabian/stables.html#4

If you absolutely cannot afford to buy or build a round pen immediately, but you still wish to do the round penning exercise, though it's not ideal yet workable, try constructing one as best you can out of a similar dimensioned 50- to 60-foot square pen or paddock area by cross-boarded off the corners to remove the corners altogether. This way, though it's not perfectly round, at least the corners are slightly curved and the horse cannot as easily find those spots to hide into. Remember, though, to clear out *everything* from that pen, all obstacles, feeders, water tubs, everything. You want an empty pen for this! And walk the fence line and grounds examining every inch of the space to make sure there is nothing there to harm the horse as you move them around at liberty.

Beginning the Round Pen Exercise

It is very important to understand, as we begin the round pen work, to grasp that:

Proper natural horsemanship round penning is *not* about mindlessly longeing a horse around and around a round pen at all, but is about the opposite: it is direct one-to-one very precise communication with very specific cues and instructions.

We're not there to wear out or over-exert the horse more than necessary! The round pen should be considered a classroom, not a gymnasium! We are there to show horses the open avenue for voluntarily joining with the human and be at peace within themselves about that. What we are going to be doing there is a communication "dance," with precise body language on your part and knowing when to release the pressure there for certain responses in behavior. **All horses learn from the *release of pressure* what it is you want, not from the pressure itself!** <---very important to memorize that in natural horsemanship training, because it will apply to everything you do with the horse when teaching them here in this round pen exercise, as well as in all other lessons you give the horse.

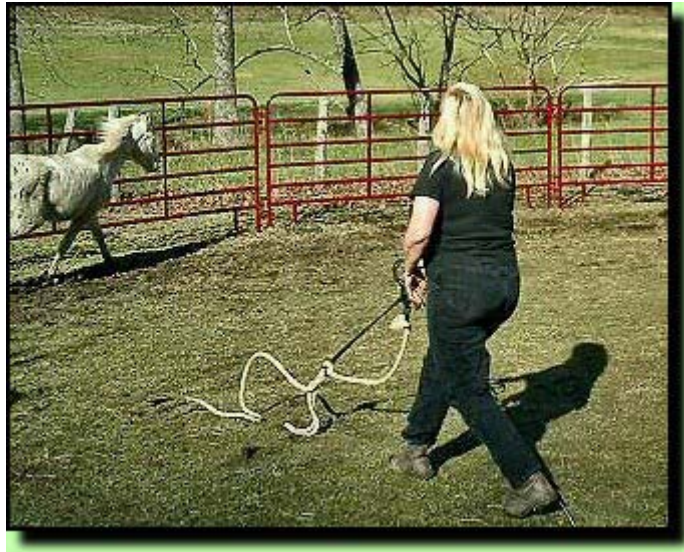
It is also crucial to remember, and I'd be remiss if I left this out even before we begin here: when you are performing this round pen work, never take a negative attitude or emotion whatsoever in there with you.

The only emotions one should ever bring into the round pen or any training arena are: infinite patience, endless empathy and a grand sense of humor. Negative emotional routes, such as anger or impatience or brutality have no place whatsoever in horse training.

This is about being calm & assertive, but not aggressive; there's a difference! Be patient, be kind in demeanor, even be empathetic to fears, but be strongly directive. **Be a kind,**

compassionate, patient, competent, confident leader and the horse will begin to trust far more and will start the journey to becoming a more attentive and trusting student.

As you begin, start right off in the round pen positioning yourself as the leader (or "lead mare") in your "herd of two." Have at least a 12-foot rope to toss in the direction of the horse's back feet to drive the horse off and away from you.



Toss rope toward back feet to achieve forward movement

You don't even have to make rope-to-back-leg contact – I rarely do. It's just the point being made that the rope being tossed back there (in their minds) is indeed driving them forward. Only if a horse gets stuck, refuses to move, do I climb that pressure scale by allowing the rope toss to touch the back feet.

Follow a policy there, however: the more wired or frightened or tense the horse's nature, the softer you toss the rope. Frightened or wilder horses already put enough pressure on themselves in the beginning, all by themselves; we don't need to be adding more than necessary. The rope toss is simply your directive to *move* and in what direction. **You're the leader! The horse from hereon is the follower in this exercise.** From that point forward, *you* decide where the horse goes and when – i.e., **the horse is not to make any turns in the round pen without being at your full direction from the get go.**

You do not need to get vocal along with your directives. It's much more effective to let the horse simply read your body language. Horses are not as attuned to words as they are body language – it is how they communicate to one another. I also find when teaching this exercise to novices, that if they allow themselves not to use vocal commands, then their body language communication becomes more heightened and accurate. **And horses read body language, follow that, far more than they do vocalizations.**

Keep the horse circling the round pen in one direction to begin. **Keep your shoulders squared directly facing the horse at all times, and keep full eye-to-eye contact.** Those alone *are* pressures to a horse.



Shoulders squared on horse, direct eye-to-eye contact

And that indeed is what we are doing in the beginning of this exercise: pressuring the horse, to teach the horse first that we are the director, the leader, and they are expected to be the follower in this new "herd of two." Horses are prey, herd, pecking order animals, who are born fully understanding this language naturally, in the wild, as well as in our domesticated pastures. **We have to have movement and pressure here to establish our directing leadership and also so that the horse has something to compare the non-pressure spot to as we progress in this exercise.**

To get the horse to turn to go in the opposite direction, next, you are going to block the front of the horse with your arm closest to the horse's nose (your other arm is your "driving arm" as you drive the horse from the rear forward with the wave of that arm or a rope tossed toward the horse's back feet with that arm). To do this properly, mentally divide the horse in half via this invisible dividing line: **Anything in front of the horse's shoulders will turn the horse the opposite direction; anything behind the horse's shoulders will tend to drive the horse forward.**



The arm behind horse's shoulders is the driving-forward arm

To turn the horse, wave your forward arm or twirl the end of the rope (overhand) in front of the horse's shoulder, or more ideally: toward the direction of/even with the horse's eye (but never connecting the rope up to the face or eye!), to facilitate that turn. Towards the eye tends to turn the horse's head. Where the head goes, the body follows. Generally, just your forward hand and a tip of your head easily indicates to the horse the turn request.



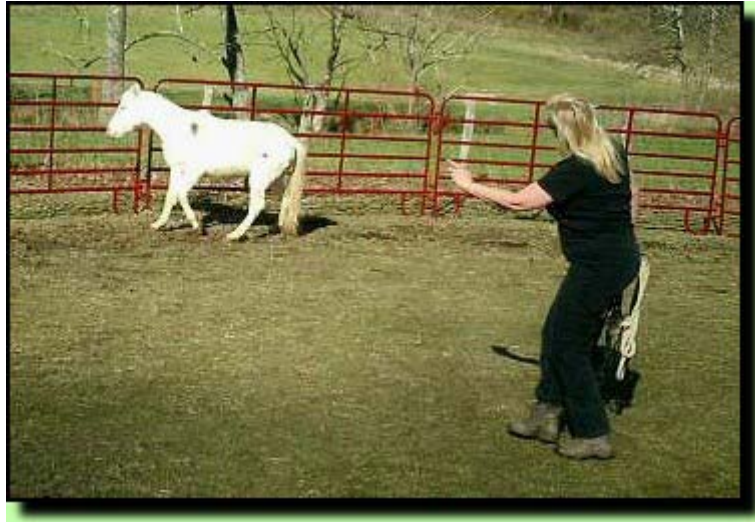
Forward hand and tip of your head directs the horse to turn



Horse moves away from head/eye directing pressure and makes an outside turn

I don't care at this point whether the horse makes an inside turn (toward me) or outside turn (away from me) as long as the horse makes the turn. We're in kindergarten here. The horse is allowed to find which turn works best for them, at their own individual trust level; they just have to make the turn. Generally, the more trusting they are feeling, they will make the turn towards me; the less trusting they feel, they will make the turn away from me. And that's okay! I'm not here to demand too much too fast, but am simply showing the horse: I direct your feet from hereon, as lead mare in our little herd, get comfortable with it.

If a horse ever threatens to run you over, refusing when you are instituting the turn, just slap the ground hard (and loud!) and fast, repeatedly with the rope as it twirls (**tip: the shorter the end of the rope you use for that spinning, the easier it is to manage**), making it far noisier and uncomfortable for the horse, and speak a loud "SHHHHHHHHH!" sound simultaneously. That usually discourages those running-through-you thoughts. Use common sense here, of course, and never put yourself in real danger. Just direct assertively to get what you want there: the turn, even if you have to keep upping the pressure to get it. **Then... turn the horse fairly often to keep the horse on its toes, having to think, having to follow your directives, but do not allow the horse to make any turn decisions on its own.**



Turn the horse fairly often both directions to keep the horse thinking, paying attention



After the horse turns, the pressure is removed with softer body language showing the "yes" answer.

Make those turning points at varying spots all around the round pen, not the repeated same place for the turn, or the horse will begin to rationalize that, "we turn right here always, correct?" and then potentially be thinking too much on their own, not listening to directions instead. Break it up. Keep the turns unpredictable. This keeps the horse thinking, listening, *following your leadership directions*.

If the horse does suddenly make an unasked-for turn on its own, immediately redirect the horse right back in the direction you had previously instructed! Quickly short-cut to the

other side of the round pen, cutting the horse off again, and keep insisting that the horse *make that turn* back into the direction you instructed. Keep the pressure higher in such cases. Smack the ground loudly with the twirling rope, speak a loud "SHHHHHHHH" to indicate: "wrong answer there!" Very important to make that instant directional correction if a horse tries to take over turns there, in order to shut off inside the horse any thoughts that the horse is leading this herd movement dance, not you, the lead mare. You are the director there, not the horse, and in this way, the horse will quickly perceive you as the lead mare "driving my herd." And the horse will begin to think/switch over to complete follower thoughts only.

It is not unusual in the beginning of this exercise for the horse to try to find other outlets to escape the pressure – like turning and facing the outside of the round pen frantically suddenly, even pushing into the sides, so make sure the sides are safe enough, strong enough to withstand that in your round pen, and high enough (at least five+ feet, or even more with jumper-types) that the horse cannot jump over when under pressure. Be calm, patient, and consistent in your directives and the horse will rule out the outside of the round pen quickly as any option out of pressure that works for them. That's part of the mental process sometimes as they discover that the route out of pressure is actually going to be: joining calmly, rationally with you.



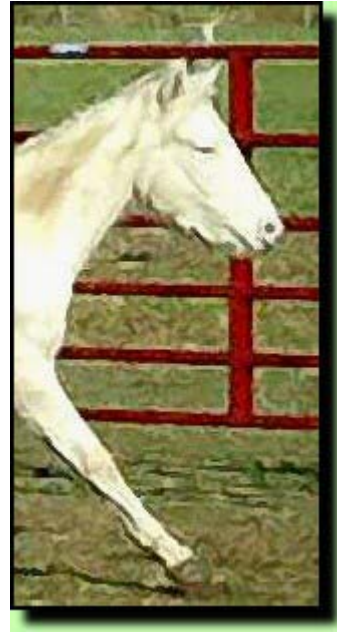
The horse early on looks outside of the round pen to find a way out of pressure other than considering *you* as the way out of the pressure.

Signs the Horse Gives of Wanting to Join with You

After the horse has ruled out "outside" escape pressure options, the horse will start showing tentative, exploratory follower thoughts/signs of submission, wanting to consider connecting up with you at liberty, to experiment inside themselves to see if that might be the right answer to receive the pressure release. And here are those early horse body language signs, often in this order, but not always (so stay perceptive and mentally list them all – or most all – off in your mind as you see them!). You will want to release pressure when you see all those signs! **Release the pressure off the horse instantly** by

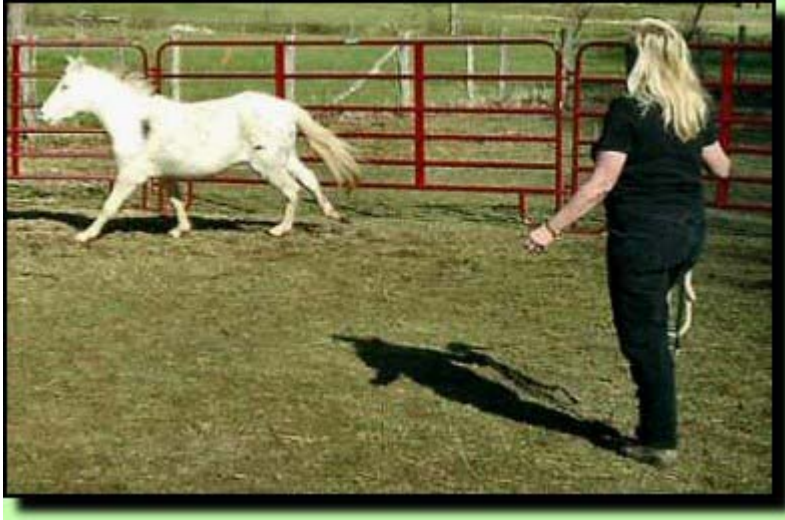
going very limply soft, slower, in your body language, then turning your shoulder to the horse, taking your eye contact completely off of the horse after you see all these signs:

1) The horse's inside ear starts remaining pointed in on you at all times, no longer pivoting away to the front, or to the outside of the pen. If it remains pointing forward or to the outside, or even briefly flits back and forth away from you, that simply means the horse is still looking for/thinking about other potential outlets to that pressure rather than joining with you.



Here in both above photos the horse's inside ear is focused more forward, as the horse considers other flight outlets to pressure, rather than connecting to you.

Turn the horse often so that the horse starts instinctively paying closer attention to you and you alone, and the inside ear will begin to remain on you at all times. This is important to notice. A horse's ears will show what the brain is thinking by where they are pointed: at you or away from you. Pointed toward you at all times, and remaining there permanently simply means: the horse is really starting to get there in realizing you are the leader they need to pay closest attention to and focus in on for further directions to follow.



In both above photos (first from far away, then same photo close up), the horse's inside ear is remaining on me at all times, indicating the horse is focusing only on me now.



Here is a horse's-eye-view showing that the inside ear (closest to me) is fully turned and focused on me, indicating that the horse is paying complete attention to my directions.

2) The horse begins to make smaller circles around you, not sticking as close to the round pen fence line. That is horse body language for seriously thinking of joining together with you, experimenting with that thought tentatively.



The horse experiments with making smaller circles around me to see if this is the way out of pressure. At this, I allow my body not to turn and follow shoulders-squared-facing-horse as usual during this smaller-circle tentative pass. This communicates to the horse preliminarily that this closer spot to me indeed is the release of pressure spot. It's like telling the horse with my body language, "You're getting warm here! Closer to me is safer, less pressure. You're almost there!"

3) The horse works the mouth/licks the lips – that's horse body language for: submission, "I understand," "You're the leader, I'm the follower." Another way of understanding what that crucial mouth-working body language means is this: **When horses are working their mouth, they are digesting your thoughts.** That's a good catchphrase to remember, and something you are going to need to be aware of in the round pen and out, when teaching the horse anything. Watch for it: it's important!



The horse works the mouth/licks the lips, a sign of understanding and submission

4) The horse drops its head while on the move (even if for just a few seconds) and appears to be "mowing the ground" with the nose as the horse moves along. That, too, is submissive, follower body language that we want to reward with the release of pressure.

At this final sign (or even some of the earlier signs if needed, to shorten the process with a horse who might potentially take too long at this, over-exerting themselves, which is why you have to stay VERY PERCEPTIVE to catch these signs happening!), **release the pressure on the horse instantly**. Go very limply soft, slower, in your body language, and turn your shoulder to the horse, taking your eye contact completely off of the horse. The horse generally will either slow down or stop altogether at that point. Horses are far more perceptive to mirroring our body language than we usually initially realize.



When the horse lowers the head like this suddenly, it is a sign of submission. I immediately remove the pressure with my eyes off and shoulder to the horse; my body goes completely passive. Pressure is now off the horse. The horse stops moving at the release of pressure and I give the horse time to think about that. Through thinking, the horse learns what is working to release the pressure.

At that stop, at that pressure release, if the horse turns its head to face you and/or pivots to face you (reward all baby-step tries!), *instantly* (quick timing is everything here!) turn your shoulder even more or back completely to the horse (the retreat/release of pressure), your eyes remaining off the horse, arms down softly to your side. Again, no eye-to-eye contact, and reward the horse with *complete pressure off* with that "right answer" response to facing you with the head (but reward baby-step head-turn tries! **Reward for the smallest try, the slightest change** and you'll get there faster). With some fear-issue horses, bending over and lowering your body stature at this time, as well, helps the horse to perceive you as not a threat.



As the horse drops the head, I remove all pressure by not facing the horse and going passive in my own body language.



When the horse stops and turns the head to face me, my body language retreats with my head & eyes turned farther away and my arms dropping down, not asking more of the horse. I do often leave one arm out which is the beginning of the cue to come to me, so the horse can become accustomed to it. View that arm out as an invisible lead rope.

Give the horse a moment to think, your back remaining to the horse, your head and eyes off the horse, so the horse can digest what they just did there successfully to reap your pressure release response to turning and looking at or facing you. Just stand there softly, quietly, back to the horse, no movement or sound on your part, and allow the horse the rest break. It is: the peaceful spot. The nice spot for the horse. We now want the horse

to memorize this get-along spot, where all pressure is off of them, so give them some time to think about it! **Through the thinking process, the horse learns.**

After a few minutes of allowing the horse to think, to feel the non-pressure spot there (often the horse will be repeatedly working the mouth there – a sign of understanding, submission, recognizing you as the leader/director), still keep eye contact off, but now walk with your shoulder to the horse, facing his rear, moving parallel to the horse's hindquarters, far enough to the rear that the horse has to turn its head to keep you in full focus (remain a safe distance away, out of kicking range at all times!).



Bend your body toward the hind quarters as you ask for the hindquarters to move away and the head to come toward you with your "invisible" lead rope.

At this point, the horse now has two distinct choices posed before him/her (inside the horse's mind):

1) Turn to pivot to remain facing you (the "white zone" where all pressure then remains off of them).

-or-

2) Leave/exit forward (the "black zone," where pressure then increases on them).

If the horse chooses #1/turns to face you (what we want here), immediately turn your back to the horse again, drop your arms to your sides softly, go body-language completely passive, head and eyes down if necessary with serious trust issue horses, removing ALL pressure again to show the horse the "yes" answer, the white zone. Another pause break.



The horse pivots to face me and my back turns even more to the horse to show the release of pressure at this right answer to turn to pivot and face me. This shows the horse that the least pressure spot is really *toward me* not away from me.

If the horse, on the other hand, chooses #2 and exits/leaves/bolts, immediately turn fully towards the horse again, your shoulders squared on the horse and toss the lead rope at the horse's back feet **as the horse is exiting**, just as you have been doing before, suddenly increasing pressure (a quick contrast to the earlier peaceful, no-pressure spot), therefore showing the black zone. Real important to do this and have instantaneous timing there, because it makes that exit immediately *your* idea that the horse leave (even though the horse already started to leave), not just the horse's idea. That's how horses mentally file that counter-move on your part: "oops, they're still the leader here – there's that rope back there again driving me forward! I need to think about this more!"



If the horse exits forward at this point, instead of pivoting to face you, and most will indeed try that route at first while early-on in this learning curve, simultaneously *send* the horse immediately with a rope toss toward the hindquarters, making this exit quickly *your idea*, not just the horse's idea, repositioning yourself instantly as remaining the leader/director of this "herd of two."

And keep that driving forward pressure on the horse – your shoulders squared, full eye-to-eye contact. Make the horse do a lap or two & a couple of turns. Or as we say in

natural horsemanship: "**Make the right thing easy, the wrong thing hard.**" This brief extra work, in the horse's mind, is harder than just standing still, facing you. The horse will quickly want the quieter, more passive, less pressure, "get-along" spot.

Communicating to the Horse With Body Language To Face You Fully and Latch On

When the horse is in the stopping/facing me position, I like to use a kissing noise when walking parallel to their hindquarters and asking for the turn, to get them to pivot around and face me. Kissing noise *is* an additional pressure. At the same time, I have an empty open hand out (the one closest to their face), coaxing with my fingers in a "come here" way. This way, I'm beginning to plant a cue to come to me (the kiss and the hand gesture), whether they understand it at first or not. Used repetitively each time I'm encouraging the hindquarters to move away from me (with my other hand that contains the now-bundled rope) and the front end toward me, the horse pretty quickly gets the cue means: come to me, face/head first, hind end away.

At this point, when I'm kissing and inviting the head to come and instructing the hindquarters to move away with my other hand, I bend my head and body slightly to the side – tipped in the direction of the rear of the horse while I pulsate my hands (like you're performing small bent-fingered karate chops in the air). It's important to see the value of your head and neck-stretch tip-to-the-side at this point. **Horses are very acutely conscious of neck and head movements/directional placements, because they indeed primarily use their own heads and necks to communicate and direct others in their herds, as well, even from a distance, so you are speaking language they are born understanding!**

Ever see a higher pecking order horse in pasture or in the wild move another lower pecking order horse away from food or water so Number One can eat or drink instead? And have you seen how quickly and respectfully Number Two reads those body language directives instantly and moves over, away quite swiftly? This is indeed what horses do to each other to establish hierarchy dominance: stretch the head out longer and assertively "push" with their head and neck, even from a short distance without ever making body-to-body contact, to move that other horse's hindquarters away and off.

We take advantage of this prey animal psychology knowledge in natural horsemanship. My head, neck and slight body bend in the direction of the hindquarters, along with the pulsating hand pressures, lets the horse know which direction I wish them to move those hindquarters: away from me.

Important: When inviting the horse to come in to me from afar, my hand which is directing the hindquarters away usually is stuck farther out, my elbow straight/less bent, while the hand which is inviting the head towards me is closer to my body, that elbow bent, hence showing the horse in body language *which specific direction I am asking for the bend*: head towards me, hindquarters away. Horses are *that* highly perceptive to pick up this exacting body language message, and they pivot accordingly.

Again, **always keep a safe distance there**, well out of kicking range! We are *parallel* to the horse at this point, not in too close to the hindquarters! When you walk parallel to their hindquarters, and make the kissing pressure noise, and are directing with our hands as described, keep it up without a pause (no release yet of the kissing noise or pulsating hand pressure!) *until the hindquarters pivot away, then release, stop asking.*

If the horse refuses to move those hindquarters away, simply increase the pressure; use your hand that is even with the hindquarters, with the now-gathered rope in it, and hold the rope arm up shaking it higher and more assertively, while still mirroring the bend you want with both hands and your head. That shows the horse you fully expect those hindquarters to pivot away, no matter what. The pressure is now increased on the horse to do *something*, not just stand there.

The horse will either pivot to face you or leave moving forward. There's nothing in between. Only a white zone and a black zone. No gray areas. In the black zone, leaving gets them sent with a rope toss to the back feet, and another lap or two (work!). Pivoting as requested reaps your instant back turn – *release of all pressure.*

But it's important to embrace baby steps here, rewarding each baby step try on the horse's part in the right direction, with all pressure removed from them at those tries, and allowing them the moment to think, to digest their success/release, even for the baby steps, and that gets them there faster. So...that means, even a tiny step or muscle move in the right direction (the *thought!*) to pivot toward you at that decision point reaps a complete release of all pressure and back-turn on your part. And a horse rest pause for a minute. Stay highly perceptive for this! **Horses learn far faster if we reward with our release of pressure for the smallest try, the slightest change in the right direction.**

If the horse did leave (choosing the black zone), and you were then required to simultaneously up the pressure and send them, putting them to work again briefly, you will want to use your body language to again encourage the stop. It's not hard to do. If you want the horse slowing down there, to start encouraging the horse to get back to where it was before when stopping/turning toward you, simply slow down your own body language – go softer, more passive, while still facing the moving horse, but much like you yourself are suddenly moving in slow motion. The horse will instantly mirror that/you and slow down. If you position yourself parallel in front of the horse's shoulder and hold a front blocking arm out if necessary at the same time as the horse is slowing down, generally the horse will then stop.



My arm closest to the horse's head (in this photo, that would be my right arm) instructs the horse to stop. Immediately turning my right shoulder to the horse while simultaneously swinging my right arm across the front of me in a kind of self-hugging gesture, will usually bring the horse's head around fully to face me, and the hindquarters pivoting behind the horse.

Tip: I find novices at this point forget sometimes that *they* don't have to follow the circle arc like the horse does. You are not required to mirror the horse; the horse is required (and knows how!) to mirror you. You yourself can quickly short-cut to the other side of the round pen at any time you need to in order to meet up with the horse suddenly on the other side (where he was headed, but you beat him there!). Do that if and when you need to get ahead of the horse to slow them down or even to turn them. A horse can outrun a human any ol' day! But short-cutting to meet them on the other side of the arc, while still remaining face-to-face, keeps you in the director seat. Try to remember that, because if you don't, you'll find yourself stuck on pointless horse-chasing mode, from behind always, when that is not at all necessary nor what this is about. You are the choreography director, standing in the middle of the stage, directing each step of the dance recital. The horse's directional (follower!) rules are to keep moving at your precise instruction, but you write the rules for yourself – cut across when needed!

Quickly the horse realizes that the bolting out of the stopped position (or even turning their rear end toward you, and refusing to move it away from you) gets them more pressure, or sent. **And horses by nature when given two choices, will pick the easier, less energy-expending choice.** They are energy-conserving animals. And usually very quickly they are choosing to pivot to face you at the stopping point instead of leaving. (It's easier – no pressure is put upon them there!) And **all horses learn from the release of pressure what it is you want, not the pressure itself.** Worth repeating there!

Incidentally, it's important to side-note here that whenever a horse is pointing their hind end toward you, that is a big sign of disrespect on their part, and is also about not accepting/respecting you as their leader. If a horse ever turns a hind end toward you like that (in or out of the round pen), use the above-described method to insist with increased pressure that the hind end move away from you, and the head toward you. A

lower pecking order horse in a herd would never dream of turning a hind end toward a higher pecking order horse or a lead mare, without paying dire consequences, so staying consistent with your respect expectations will get a horse there faster in respecting you and acknowledging you as their competent and confident leader. So remember that in this round penning exercise, as well! Add pressure to the horse when the hindquarters are facing you; remove the pressure when they pivot the hindquarters away from you and face up to you.

Very quickly the horse begins to conclude that the area closest to you is the least pressure spot, as well as the safest spot.



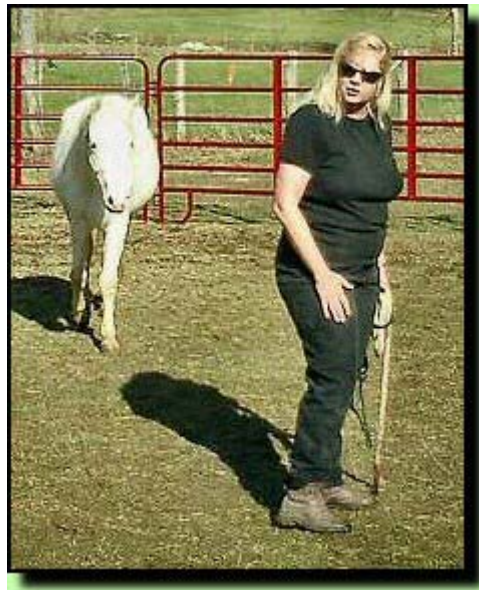
Pressure is released when the horse pivots the hindquarters away and faces me.



Make your body posture less threatening as the horse first approaches.



If the horse feels safe, the distance quickly closes.



Here is another angle of the horse's latch-on approach. Generally, the horse will begin to approach you closer and closer at this point, because the horse has learned that the areas closest to you are actually where the pressure comes off of them. And **all horses learn from the release of pressure what it is you want, not from the pressure itself.**



The horse comes in closer and joins up!

If a horse is not wanting to come in too close at first, but still remains facing you, there is a way to encourage the horse to come in closer: Once the horse is consistently facing you at the stop, and beginning to pivot to remain facing you at all times, you then build upon that by next, again, walking parallel to their hindquarters, making the kissing noise, directing with your hands, and again they pivot to keep facing you, but in essence, **they now are starting to technically make a circle around you**. Reminder: **I only kiss when they are *not* moving as requested; the second they move the hindquarters away, the kissing pressure stops/is released immediately**. The minute they shift those hindquarters away, my rope hand drops limp to my side (release of pressure) along with the kissing stopped. **When the horse does what you want, quit asking, go more passive!** Quickly the horse learns to come to the farther-away-from-him free hand more, push the hindquarters away from that rope pressure hand. (See photo series below):



Making a kissing noise while asking the horse's hindquarters to pivot away and the head to come toward you encourages the horse to walk forward toward you.



The horse comes in closer and closer by my asking the hindquarters to disengage and the head to remain facing me, as I walk toward and parallel to the hindquarters. The horse is beginning to follow, head forward, hindquarters away.

Before long, they are pivoting/turning circles around and around you, but always remaining facing you respectfully, hindquarters moving away as you step toward the back, and you are walking that circle together, you the leader, the horse, the follower. Soon, you need no pressure cues at all, and where you go, the horse pivots, turns and keeps his head facing you. Life is easy here for him, because no pressure is on the horse when he does this. Just follow and life is easy!



With your body language, and a kissing noise, ask the horse's hindquarters to move away and the head to remain facing you. Walk toward the rear of the horse, parallel to the hindquarters when asking for this.



The horse will pivot the hindquarters and turn to keep facing you.



Walk repeatedly in a circle in the direction of the horse's hindquarters, asking with your rope hand for the hindquarters to pivot, disengaging the hindquarters (the horse's inside hind leg crosses under/in front of the outside hind leg). The horse is beginning to understand how to follow your lead at every turn.



Turn and ask the hindquarters to pivot on the other side of the horse, as well. If the horse crowds too close, bump the horse off of you with your elbow. This is about teaching respectful following behavior, and over-crowding is not respectful of your lead mare body space.

Here are more photos asking the horse to pivot and remain facing me, in essence: the beginning of following the leader:





At this point, the horse fully understands the new game and you begin to make the circles wider and wider (careful not to lose them by going too big a circle at first! Baby step increments here!) and quickly they are indeed following you, increasingly in submissive, head-down mode. And at this point you can begin to walk a straight line, perform a zig-zagging pattern, and they remain latched on, will follow you anywhere, at liberty. If they at any time bolt out of this following spot, they will simultaneously get sent, as before, with rope tossed towards the back feet. **Remember, when the horse is following you submissively: have no eye-to-eye contact, and your shoulders or back are turned away from the horse – pressure off! Life is good here!**



The horse is now following wherever I go, perfectly joined up/latched on via an invisible lead rope!

Why This Works to Set Down Leadership/Follower Foundation

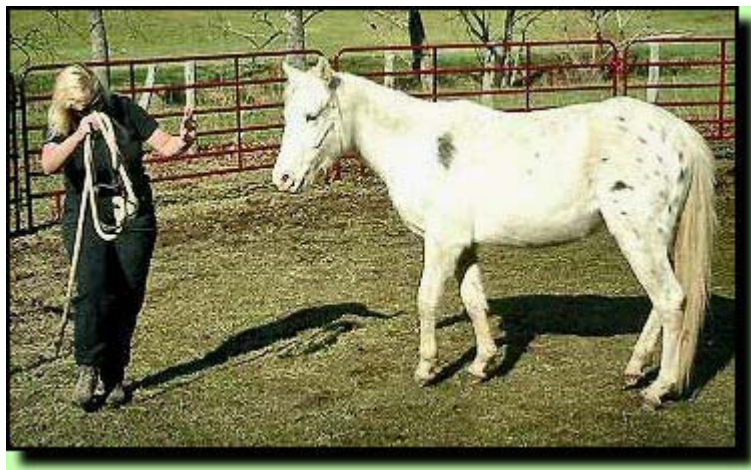
In horse language – in the wild – and in our domesticated pastures, there is a natural rule of horse/prey animal psychology that states: "**he who moves the other's feet is higher up on the pecking order.**" And since all horses are pecking-order herd prey animals, this

method of round penning establishes you, in language horses fully understand, as the higher pecking order animal there, because **it is you moving their feet, not the other way around**. Often if we examine closely our problem situation with a particular horse, we might be surprised upon closer observation to discover that: our horse has learned to move our feet! Therefore, the horse has remained the one higher up on the pecking order over us, therefore, technically: the leader. Real important to turn that around as we begin to train or retrain our horses.

It's also important to realize here that actually horses like, *even prefer*, the follower spot in life far more, and deeply respect it. They get downright relieved that they can stop thinking/worrying about that "who's the boss?" problem question. Often, as the horse begins to latch on, follow, you will hear big deep sighs here and there from the horse's direction. And that is indeed what it sounds like: a sigh of relief, understanding, relaxation, and for some: the first time around a human!

What horses do not like, on the other hand (actually often despise and definitely do not trust) are: horses (and even humans!) whom they deem below them on the pecking order and not proficient leaders. That's just the nature of prey/pecking order animals – simple prey animal psychology they live by day to day. So, keep that in mind as you do this round penning exercise for the horse's own good. The horse will be softer and happier about it all at the end of this exercise and in a far better, now more workable, calmer, rational, trusting, relieved even frame of mind.

You also will have accomplished putting into place cues to move the horse's hindquarters away from you (called "disengaging the hindquarters") from now on, and also a cue to come to you when called with the kissing noise and the "come here" hand signals. And from then on, when you enter that horse's space, or even go to "catch them" out in pasture, if the horse turns the hindquarters toward you disrespectfully, irritably, you can up the pressure, jiggle the bundled ropes in your hand toward the hindquarters, tip your head and body in the direction you wish the hindquarters to move away to, make the kissing pressure noise, signal with the "come here" hand, and the horse will know that means: pivot to face you, respectfully, thank you, then come.



This entire round penning exercise I have been showing here is also, in my opinion *the best foundational solution to the common problem of hard-to-catch horses.* If you lay this foundation down correctly in the round pen, the horse stops being hard to catch, even later out in pasture. The horse from then on perceives you as herd leader, them as follower and responds to those cues to come, because you have planted your body language cues for all that into their brains. They learned how to come to you and follow! And the reason this works so well for that hard-to-catch problem is: to get a horse to come, even at liberty, it requires **activating and having control of the hindquarters**, which is their source of all forward propulsion. Via completing this round penning lesson, you now have full control of their hindquarters and their heads, *even while at liberty*, along with cues in place to communicate with your body language for the horse to move those hindquarters, then come. You practice this enough in the round pen, it carries over easily even out into the pasture!

The above round pen exercise is just the beginning of training, however! Once the horse has latched on, joined with you successfully, physically and mentally on follower mode, then turn and begin bonding and move on into further training.

After the Latch-On: What to Do If a Horse Cannot Be Touched

If an issue horse still will not allow human touch for bonding or haltering to begin, even after the previous latch-on exercise is completed successfully, then begin to desensitize the horse to your hand and ropes/halter. This often indeed will be needed for serious trust-issue horses, formerly abused horses and wilder horses who have never been touched kindly by Man before. But we've now got a healthy foundation as leader laid down that is going to serve us well in this next step to help the horse get past touch fears.

Desensitization processes are very carefully and slowly applied to such sensitive horses. There's a real fine art to it, though. **Timing and technique is everything!** I find it best accomplished with such fearful-of-touch horses in the latched-on follower mode, both of us on the slow move at all times. This helps the horse to get there faster and respects the horse's fears and what he innately needs to do to deal with those fears as a prey animal.

Fact: when horses are afraid, they MUST move their feet. That is simple prey animal psychology, just how nature designed horses to be as flight prey animals (food for predators!). This instinct has served them well for thousands of years. Therefore, I respect that need and allow the move during early desensitizing, so that the horse can deal with fears naturally, but I direct the move while the horse is latched-on, by having them follow me, them continually disengaging their hindquarters every time I make a turn. I make frequent turns throughout so the horse has to keep thinking about following (more effective than just walking a straight line).

To begin hand desensitization, as I make a directional turn, my hand might reach back quite passively (no eye contact, my side to them) and I briefly brush the horse's nose gently ("oops, was that an accident, or was it on purpose?" the horse sometimes wonders, startled). But done so nonchalantly, passively and quickly like that, no-big-deal-like and

definitely not giving them any message that it will go any farther than that because my hand is pulled away just as fast, the horse barely has time to register the touch. **The retreat is *everything* in all effective desensitizing!** But the horse indeed knows it was touched and "lordy, didn't die after all when that predator touched! And look that predator is even walking away! Whew, I'm still safe!"



I think it is real important to step outside of our predator way of thinking right here to get perspective on what it must feel like to be that horse prey animal there, fearful of a friendly human predator's first touches so that we gain the proper empathy, patience and understanding. **And all horses know full well that we are predators; we act like predators, we look like predators, we even smell like predators!** To get inside that horse's mind and touching-fear feelings, try this visualization exercise:

Picture you are lost in the woods and suddenly are cornered by a big grizzly bear, no means of escape, no help in sight. Suddenly, we have turned from being predator to being prey ourselves in that grand food chain of life! Gulp! Imagine your fear level there! Now....imagine that this particular grizzly just fell off a circus truck and is actually a friendly, harmless, loving even, trained bear, hand-raised since birth by kind humans, but we sure don't know that yet when we are cornered by him in the woods! That grizzly looks like a dangerous predator, smells like a dangerous predator, even acts like a dangerous predator as he stands there roaring on his two back feet, as he was maybe trained to do to say hi folks! He ambles toward us to touch us, as he's been taught to do in the circus, but we don't see it that way, do we?!! We see a predator who is probably going to harm or eat us! We are terrified! Imagine your scrambled thought attempts at retreat from this predator!



Gee...the friendly predator bear only wants to *touch* you!

Now... think about the horse you are desensitizing to human (predator!) touch. Understand: the fearful horse feels exactly the same way as you would in the above scenario, no different. **We are going to have to convince him to trust us, and trust here is an *earned* thing, not a given.** Through our actions and retreat from actions, the horse will become convinced (*on its own!*) that we are safe and mean them no harm. So, we have to begin our touching desensitizing lessons slowly, on a safe level the horse can digest one baby step at a time, the horse never being made to feel threatened by us at any point. Keep that mindset from this point forward, it's important.

The horse digests that first miniscule nose touch success (*survival!*) one tiny thought/step at a time. In some horses, the shoulder area is more easily accepted as a first touch spot while on follower mode, while others, the neck if you can reach it during the turn. In the most serious fear-issue horses, I find the points on the front of the head from the nose up through the forehead generally works best. Experiment at first to find where the horse allows the first brief, very fleeting touch – it's usually the spot that is easiest for us to reach, the place they are making most accessible to us, **but remember the quick retreat is even more important than the touch!**



You build baby-step-by-baby step from there. Turn directions, touch again. Retreat hand instantly. Find the quickly accepted spot and built upon it. Before long, using this advance/retreat, while still on the move, I have constructed about a palm-sized area on the horse that is now well desensitized to repeated touch, and my hand can linger there in that spot increasingly longer and longer, even as we move together in unison, the horse tolerating it, doesn't bolt.



Incidentally...if the horse does bolt out of the join-up position during any of this desensitizing step, I immediately send them around for a lap or two (because those are the rules of our herd of two!), couple of turns (**make the right thing easy, the wrong thing hard**). Very quickly they run right back to the less pressure follower spot, *beg to come back usually*, because it feels better/easier inside of them, quieter and less work for them, less pressure on them. And you begin again, this time less pressure there, going slower,

because the bolt simply exhibited their threshold line you crossed over too long with the touch, or you are proceeding too fast in the entire process for their comfort level and they flew over the top in their instinctive flight survival reaction. I file that away mentally – that threshold line and what the horse just told me there about our pace perhaps. And I then work to cross a threshold better, more effectively, more sensitively next time.

Once I have about a palm-sized area desensitized, I now have a touching-foundation there that I've laid down (purposefully!) that I'm going to use to my full advantage proceeding forward. Then and only then do I stop my movement, and hence the horse's movement stops, mirroring me. I still keep no eye-to-eye contact and still only my shoulder facing the horse. I rub longer there in the "safety spot," then retreat my hand, take a pause, allowing the horse to digest the release, the success there. Then return. Rub longer, then retreat. This all now from a standstill. I also take that opportunity to allow the horse to sniff my rope/halter so that it is not perceived as a threat.



From hereon, I can usually accomplish the remainder of the desensitizing to the human hand touching and rubbing work on them the same advance-retreat route I just described and we no longer need to move around for that. Often I will work to desensitize the horse to the rope/halter at this point so that they can be haltered and desensitizing can go faster. As the face is allowing human touch, I will also work to rub the horse's face and neck with the ropes to also desensitize them to that, as well. Soon I can get a rope around the horse's neck via advancing and retreating even that (put the rope around neck, then quickly remove it, several times repeatedly). If the horse needs to move, I move with the horse.



While the rope is around the neck, I will work to help the horse learn to drop the neck via pressure and release. A lowered head is a relaxed horse; a high head is a tense, "on alert" horse. I am teaching the horse to drop the head, relax, trust that I will take care of them, watch out for them, and readying them for haltering gently. I apply downward pressure on the rope around the neck and release for the smallest try, the slightest change in head drop. Quickly the horse lowers the head and neck.





With the horse is relaxing more, I go ahead and put the halter on, then give the horse a rest break. Real important to take these breaks, stand there, asking nothing of the horse, so that the horse can digest each incremental success.



To desensitize further, now that I have the horse haltered, I rub that safe spot that is familiar now to touch, but then dart right outside the threshold line, only to return to the safe spot again, then quickly retreat my hand altogether. I am also beginning bonding here, search touching for the horse's favorite spots to be rubbed and scratched so that I

can return to them up the road if the horse ever becomes afraid and needs nurturing support.



While desensitizing the horse to touch, I dance over to areas that tense the horse, but retreat just as fast. During that release of pressure (the retreat), the horse thinks, relaxes, digests that I crossed that threshold line. But it went so fast and I retreated before the horse had time to react or leave, that the horse decides it is safe to stay there; the horse digests that success and realizes, again, "I didn't get eaten! Maybe this predator is safe to trust!"



Sticking a finger in the corner of the horse's mouth helps the horse to work the mouth and relax.

Step by step, the threshold lines get removed and redrawn. But let me give an analogy here to help explain better *how* further desensitizing is done properly from this point forward:

Picture you're painting the horse with a paint brush, paint and all. The already-desensitized places represent where you've already painted. The rest of the horse has no paint whatsoever on the body – is not desensitized to touch (the paintbrush/your hand) at all. **Be fully aware at all times of that very specific line where the horse is painted (desensitized) and where it crosses into non-painted (non-desensitized) areas. Memorize it. Ongoingly. It is crucial.** Because that line will expand as you go along, but only if you correctly advance and retreat as described. Keep track of that line, just like you'd keep track visually of where you painted a wall in a room and where you haven't yet. It's that important to keep those lines straight in your mind when working with fear/touch-issue horses as you proceed. Knowing exactly where those lines are, you're going to be quickly darting over them, but just as quickly retreating back to where the horse was already painted to linger there **before the horse has time to react.** However...you indeed got a "base coat" applied in that quick dart over the line and the horse knows that, but isn't as threatened by it, because it's fast at first. Therefore, the horse doesn't feel compelled to move away. **Retreat before the horse retreats and you'll get there faster.**

Allow the horse periodic rest breaks throughout, where no touching is going on at all, to give the horse sufficient time to relax, "let down," stop holding the breath, even work the mouth and *to think* with no pressure whatsoever, to learn that he is indeed remaining safe, even while being touched. Often during this break, the horse will spontaneously begin to work the mouth and even sigh. Wait for that if you can before proceeding again.

Desensitizing is a highly perceptive – and empathetic – dance. Read the horse carefully and watch for body twitches or movements that indicate you lingered too long in the new unpainted areas and at those times, quickly retreat back to the already-accepted spots. Remember: a horse has to move the feet when afraid. If the horse moves or tenses enough to suddenly feel the need to now actually institute a reaction like movement, you've gone too far over the threshold line or lingered past it too long without you giving a proper retreat (**the retreat IS the release of pressure**). If the horse suddenly indeed moves the feet, you missed your retreat-before-the-horse moves timing. **Timing is everything here! So are heightened perceptions.**

If your retreat timing is good, very good, those threshold lines begin to get pushed farther and farther back, until, eventually, the entire horse is "painted" (desensitized) all over and the horse accepts human touch well everywhere and is actually enjoying it now. Most horses melt at this point into the pleasurable stroking. I have found that touch fear issue horses, once past that fear, are actually *touch deprived* horses and by this point, they can't *believe* how good it all feels! We are stroking gently, soothingly (never patting!); it feels tremendously good to the horse, and if it is the first time a horse has felt this from a human's direction, well, you've pretty much won a friend for life!

It is vitally important to understand the sensitive dance nature of desensitizing. Advance and retreat is what it's all about! **Resist your predator urge to "go for the whole goal,"**

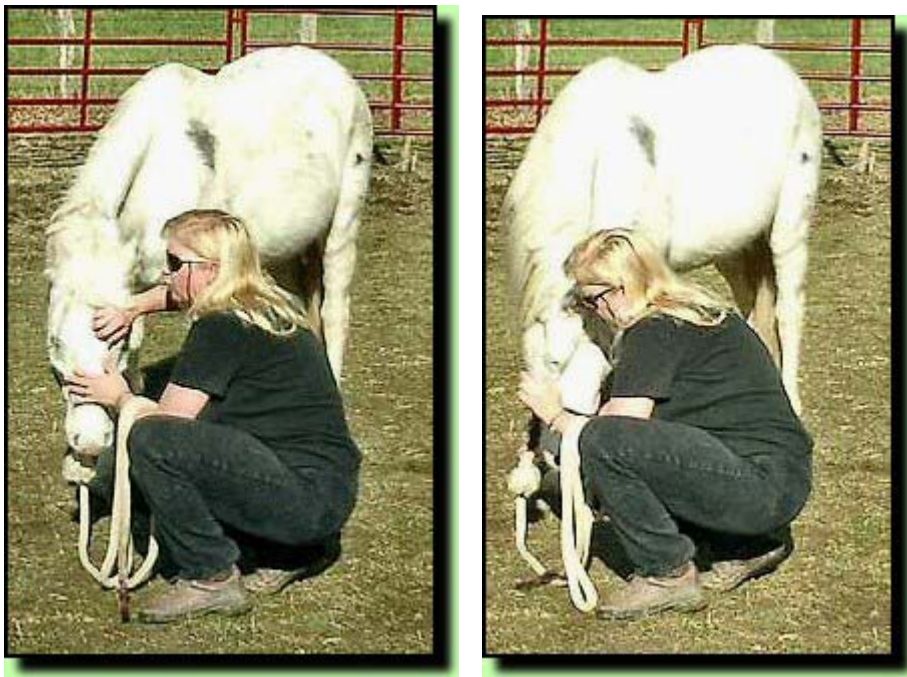
to try to go too far too fast, because the opposite works better. The longer (patient!) advance/retreat way is the short way.

However, done right, with split-second retreat timing and perception skills, desensitization actually can go remarkably fast!

After I have the horse desensitized to human touch all over, and I have created a happier, more relaxed horse, then I can continue with crucial deeper bonding techniques, and I can move the horse along into setting down more training foundation. Generally, I find that even with serious trust issue horses, formerly abused horses and even wilder horses, once I have accomplished all that is described above, and on the preceding round penning pages, **they are now officially on a normal horse learning curve!** They may need more desensitization to various other things as we go along here and there, but they fully trust by this point that I will never harm them, only nurture them, and will remain their fair, competent leader. And that is all any horse wants!

This round penning exercise has a remarkably healing, and even relaxing effect on all horses by the end of it, especially with those horses who have never been given a fair deal in life from the human direction.

I always make sure I exit this, and all, lessons on a high positive note, with a relaxed horse in a happy spot who is craving far more of this good, loving human contact stuff! It's important to do, because that makes the horse much more willing to enter into next-lessons up the road.



It may be hard to believe, but the above horse, and in all these round penning pictures, is formerly wild horse Skylar, fresh off the range. Via natural horsemanship gentling methods, her true, sweet

nature is unburied and allowed to flourish. Skylar is a true pleasure to work with and quite the sweetheart!

How do I end a first round penning lesson on a proper positive? Easy! Just walk away. The horse will often follow, while displaying, "Huh? Wait...come back...but...but...I was really enjoying this! We were only just getting started here!" Still... just walk away.



Always leave a horse wanting more!

To see more pictures of Sylvia demonstrating round penning and training the Natural Horsemanship way on **3 1/2-year-old Thoroughbred "Belle,"** click here:
<http://www.naturalhorsetraining.com/TrainingBelle1.html>

To see more pictures of Sylvia demonstrating round penning and training the Natural Horsemanship way on **4 1/2-year-old Spotted Draft "Sampson,"** click here:
<http://www.naturalhorsetraining.com/Sampson1.html>

To see more pictures of Sylvia demonstrating training the Natural Horsemanship way on **Roanoke Valley Rescue Horse 10-year old Arabian "Cassie,"** click here:
<http://www.naturalhorsetraining.com/TrainingCassie.html>

To see more pictures of Sylvia demonstrating training the Natural Horsemanship way on **2-year-old Paint "Doc,"** click here:
<http://www.naturalhorsetraining.com/TrainingDoc1.html>